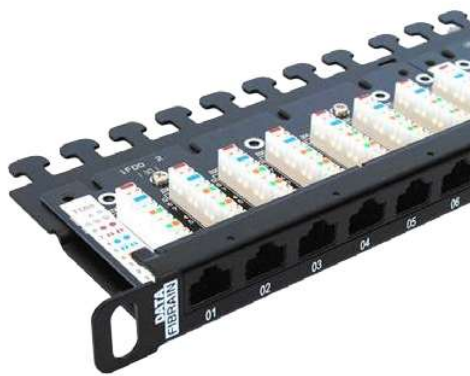




Patch panel 1U Quick 6 XQ100.200
UTP 24 ports

- Standards**
- 19" standard - facilitates mounting
 - Structured cabling comply with ISO/IEC 11801:2011, EN 50173:2011, TIA/EIA 568-C.2 certified by independent laboratory centres
 - Verification in accordance with the new standards by independent laboratory centres

- Features**
- 1U, 19"
 - Depth: 110 mm
 - 8-pin IDC connectors
 - Material: powder-coated sheet, black RAL9005
 - Facilitated cable arrangement (cable shelf)
 - Exchangeable description field
 - Clear numbering of ports and panels



Patch panel 0.5U Quick 6 XQ100.205
UTP 24 ports

- Standards**
- 19" standard - facilitates mounting
 - Structured cabling comply with ISO/IEC 11801:2011, EN 50173:2011, TIA/EIA 568-C.2 certified by independent laboratory centres
 - Verification in accordance with the new standards by independent laboratory centres

- Features**
- 0.5U, 19"
 - Depth: 95 mm
 - 8-pin IDC connectors
 - Material: powder-coated sheet, black RAL9005
 - Facilitated cable arrangement (cable shelf)
 - Clear numbering of ports and panels

ELECTRICAL AND MECHANICAL PARAMETERS

Insulation strength [MOhm] min	500
Contacts resistance [MOhm] max	20
DC Resistance [Ohm] max	0.1
Compliance with the norm	IEC 60603-7 Class E
Compliance with the norm	TIA568-B Cat.6
Frame	1.5 mm steel sheet
Jacket	Non-shielded RJ45 Cat.6
Housing	UL94V-0 black thermoplastic
Contact material	phosphor-bronze
Contacts	0.46mm diameter covered with 0.75 µm gold and 1.3 µm nickel layer
Jack durability	>750 connection cycles in accordance with EN60603-7
IDC connector	IDC LSA
Wire diameter	0.4-0.65 mm (AWG26-22)
IDC durability	>200 connection cycles
Coupler material	phosphor-bronze
Coupler coating	1.27 µm silver and 2.5 µm nickel layer
Sequence identification	T568A and T568B